



THREE DRAWINGS FROM THE ILIAD

Leonard Baskin
Etchings
20" x 14", 1962



American sculptor and graphic artist, Leonard Baskin was born in 1922 in New Brunswick, New Jersey. His drawings of Homer's famous epic express an imposing and stately power. The three etchings, number 32 out of an edition of 90, were printed by the Gehenna Press in 1962 and are signed and numbered by the artist.



STRUCTURALIST RELIEF

Charles Biederman
Aluminum and Steel
36" x 29" x 10", n.d.

Charles Biederman launched his career with two important exhibitions in New York City in March, 1936. He moved to Paris the following October but returned to the United States nine months later, disillusioned with European modernism and convinced that only in America could a truly new art be developed. In 1942, he settled in Red Wing, with his wife Mary and daughter Anna, where he developed his theories and perfected his art. Biederman's

unique artistic contribution grew out of a half-century-long study of nature's structural processes, building on the pioneering achievements of the artists he admired most: Leonardo, Courbet, Monet, and Cezanne. *Structuralist Relief* is on loan to the Anderson Center by Ms. Johanna Ghei.

UNTITLED

Alexander Calder
Color Lithograph
24" x 17", 1969



This full color lithograph captures the joy and exuberance of Alexander Calder and his unique art. Filled with playfulness, wit, and Calder's artistic genius, its array of shapes and colors approximates the twirling, self-transforming motions of Calder's famous mobiles. The piece is hand signed in pencil by the artist as well as being signed in the plate.



UNTITLED

Alexander Calder
Color Lithograph
30" x 21", c. 1970s

Filled with lively primary colors and sensuous curvatures, this large, full color lithograph celebrates depth, balance, and buoyancy, the fundamental characteristics of Calder's overall body of work. The piece is hand signed in pencil by the artist.

GREEN BIRD

Marc Chagall
Color Lithograph
27" x 20", 1962



Russian-born French painter Marc Chagall is one of the greatest and most revered artists of the twentieth century. He chose lithography as a print medium because it offered him almost unlimited painterly freedom to employ his lush colors and extraordinary rich subject matters. This full color lithograph is hand signed in pencil by the artist.

OASIS

Warrington Colecott
Intaglio Etching/Prepublication Proof
15" x 35", 1998



Warrington Colecott is emeritus Leo Steppat Chair Professor of Art at the University of Wisconsin in Madison. One of the most important American print-makers of the twentieth century, Colecott's highly detailed and often sardonic etchings are housed in virtually every major art museum in the United States, including the National Gallery of Art, the Metropolitan Museum of Art, and the Guggenheim. *Oasis* is a unique prepublication proof and the only one of this edition to be found.



CHANT 5: REPROCHES DE VIRGILE (CANTO 5: VIRGIL'S ADMONISHMENT)

Salvador Dali
Woodblock Engraving
10" x 13", c. 1960s

This original woodblock engraving by Salvador Dali is hand signed in blue crayon and is from his famous *Divine Comedy Suite*. Working under commission from the Italian government in the early 1960s, Dali executed a total of 100 wood engravings depicting, in his own unique vision, various scenes from Dante's 14th century masterpiece.

THELONIUS MONK: DEVIL ON THE KEYBOARD

Willem de Kooning
Lithograph
34" x 23", c. 1970s



Dutch-born painter Willem de Kooning shares with Jackson Pollock preeminence among Abstract Expressionists. *Thelonius Monk: Devil on the Keyboard* bears de Kooning's unmistakable signature of precision, spontaneity, freshness, and speed. It is a kind of visual riff, de Kooning's own solo improvisation in homage to the great jazz pianist. The piece is hand signed in ink by the artist.



BIRD OF PEACE

Herb Fritzke
Intaglio Color Etching
28" x 35", n.d.

Award-winning printmaker Herb Fritzke worked with his mentor, Malcolm Myers, for more than 35 years as assistant and master printmaker. His copper plate etchings are marked by a deep-cut bravado, subtle plate tones and dynamic color selections. *Bird of Peace* is signed by the artist.

MONKEY

Henri Gaudier-Brzeska
Lithograph
8" x 8", 1913



Henri Gaudier-Brzeska was born in 1891 at St. Jean de Braye, Loiret. His talents as an artist were impressive, and his Vorticist aesthetic proved to be important theory. After months of fighting and two promotions for gallantry, he was killed in a charge at Neuville St. Vaast on June 5, 1915. As Ezra Pound wrote in his memoir of Gaudier-Brzeska, "he was part of the war waste. A great spirit has been among us, and a great artist is gone." Henri Gaudier-Brzeska is memorialized today in the Salle Gaudier-Brzeska in the Musee de l'Art Moderne in Paris. Lydia Sargent Macauley donated the piece in memory of her parents, Louise and Ralph Sargent.



UMBRELL-ABRA

Gita Ghei
Fabricated Copper, Steel, Bronze, 1997

Gita Ghei has a BA in Classical Studies from Reed College. Playing with the classical motif of the candelabra, Ghei has created this wonderfully whimsical piece.

ROME SUITE #18

Diane Hanson
Intaglio Duotone Etching
40" x 43", 2003



Born in Minnesota and educated at the Boston University School for the Arts and at Southern Methodist University, Diane Hanson is a painter and printmaker currently residing in Miami, Florida. A recipient of numerous awards for her work, she has exhibited her work throughout the United States and Europe.



ACROSS THE VALLEY

Ann Jenkins
Oil on Linen
30" x 40", 2002

One of the finest artists in the Upper Midwest, Ann Jenkins has exhibited her work in many galleries and museums throughout the United States, Canada, and Sweden. Her work has been featured on the covers of numerous art and literary publications. Quintessentially northern in theme, her work is filled with rugged, expansive landscapes that are rendered in lush, bold, and contrasting colors. Ann Jenkins lives and works in Duluth, Minnesota.

TURTLESQUE

Gendron Jensen
Graphite on Paper
18" x 28", 1987



Gendron Jensen was born in River Falls, Wisconsin, and lives high in the Sangre de Cristo Mountains of northern New Mexico. *Turtlesque* is a meticulously rendered, almost monumental, graphite drawing that draws the viewer beyond the ordinary anatomical context to a deeper, more spiritual realm. Jensen's work is included in the collections of the Smithsonian Institution, Minneapolis Institute of Art, Weisman Art Museum, Walker Art Center, among others. The piece is initialed and dated by the artist.



THE SESAME BLOOMS SUCCESSFULLY HIGH

Wang Jifa
Chinese Brush and Ink
3' x 12', n.d.

Wang Jifa, from Quzhou, China, achieves beautifully realistic forms, highly detailed and complex in their representations. Original and unique, *The Sesame Blooms Successfully High* is a large scroll whose artistic roots go back 2000 years. Wang Jifa was a resident of the Anderson Center in September, 2003, the inaugural artist of the Anderson Center/Red Wing Sister Cities Artist Exchange Program.

TWIN STARS OF FOSTER AVENUE

Peter Jogo
Black and White Mezzotint
8" x 10", 1999



Born in Deposit, New York, in 1948, Peter Jogo was educated at SUNY-Albany and Cornell University. *Twin Stars of Foster Avenue* is a silent nocturne that evokes the quiet strength of American rural communities. The piece is numbered and signed in pencil by the artist.

NEAR WARRIOR'S MARK

Peter Jogo
Color Mezzotint
8" x 10", 2002



A self-described sharp focus realist, Peter Jogo is concerned with what he calls "the depiction of striking lighting situations, quiet moments, and easily overlooked scenery." *Near Warrior's Mark* is signed and numbered.



SUN ON 6

Jasper Johns
Linocut
5" x 4", 2000

Jasper Johns emerged on the art scene in New York in 1955. *Sun on 6* is an original linocut and the first Johns has ever done. This signed edition is limited to 200 copies, of which 26 are numbered 1-26. This is number 9. The accompanying poem is by New York poet Jeff Clark and is signed by him on the colophon page.

THINKING

Alex Katz
Lithograph
5" x 4", 2000



Painter Alex Katz played a major role in the burst of activities that marked American art and poetry in the fifties and sixties, and throughout his career he has collaborated with some of America's most prestigious poets, including Frank O'Hara, John Ashbery, and Allen Ginsberg. The signed edition of *Thinking* is limited to 200 copies, of which 26 are lettered A to Z. This is letter A. The accompanying poem is by influential American poet Robert Creeley and is signed by him on the colophon page.



THE SUN EXPOSED THE GARDENER'S DILEMMA

Marley Kaul
Acrylic
24" x 27", n.d.

Marley Kaul's paintings are included in a wide variety of permanent collections, including the North Dakota Museum of Art, Tweed Museum, and Weisman Art Museum. With its autumnal setting, *The Sun Exposed the Gardener's Dilemma* is a beautifully balanced piece filled with vibrant colors and contrasts. Marley Kaul lives and works in Bemidji, Minnesota.

WINTER

Paul Klee
Color Lithograph
10" x 14", 1939



In the final years of his life, Paul Klee worked at a near feverish pitch, producing an astonishing number of drawings, paintings, and lithographs. In 1939 alone, the year *Winter* was completed, he created 1,254 pictures, more than he had ever produced before. Given Klee's declining health and the escalating political events leading to World War II, this is a truly stunning output by anyone's standards. *Winter* is signed in the plate as well as being hand signed by the artist in pencil.

CANYON
Karen Kunc
Color Woodcut
21" x 17", 1999



Much has been written about Nebraska artist Karen Kunc—about the uncommon beauty of her evocative images, about her quintessentially American themes of landscape, ecology, and nature. "Color reduction" is a complex printing technique that involves carving, inking and printing in successive stages off a single piece of wood. Kunc has exhibited her unique "color reduction" woodcuts throughout the world; her work is included in the collections of the Smithsonian American Art Museum, the Museum of Modern Art in New York, the Walker Art Center, and elsewhere.



CERAMIC SERVICE PLATE
Roy Lichtenstein
1926/3000
12 1/4" diameter
Rosenthal (Germany), 1992

This limited edition, signed service plate by Roy Lichtenstein—one of the leading exponents of modern American art—quotes fragmentarily from the artist's own repertoire of Pop art imagery.

PERPETUAL MOTIVE
Man Ray
Serigraph
5 3/4" x 7 1/2", c. 1972



This unique two-fold greeting card with original serigraph depicting a metronome with an eye on its hand is initialed "MR" and signed "Julie et Man Ray." The piece is one of 100 copies laid in vellum paper.

UNTITLED
Man Ray
Two-color Etching
10" x 13", n.d.



This untitled two-color etching, numbered 12/20 on paper chine, is signed by Man Ray in pencil. A rather cubistic image in thin lines against a soft blue background, its primary subject is the elements of a face assembling themselves from and in the contours of a woman's torso.

DECORATION MASQUES
Henri Matisse
Cut and Pasted Paper
Lithograph/Prepublication Proof
38" x 14", 1953



A year before his death in 1954, Henri Matisse was confined to a wheelchair and plagued by declining health. He began a series of cutout paper designs in stunning pastoral shapes. "Now that I can't get up," he wrote, "I've made myself little gardens to go for walks in. Everything is there—fruit and flowers and leaves, a bird or two." *Decoration Masques* is a full color, cut and pasted paper lithograph that has been hand initialed by the artist in pencil. The work is a prepublication proof and one of the first of this edition to be done. Both Matisse and his printer worked side by side on the trial proofs until they were perfect. Matisse then approved the work by initialing it in pencil.



NOCTURNE
Joan Miro
Original Color Lithograph
20" x 58", 1958

Dominated by strange archetypal shapes, *Nocturne* is an expansive piece distinguished by primitive brush strokes and echoes of almost childlike finger-painting. A vibrant blue, creating in effect several individual interrelated paintings in one, surrounds each shape of this original, unsigned lithograph.

INDELIBLE MIRO I
Joan Miro
Color Lithograph
11" x 14", 1972



Filled with lively primary colors and a diversity of natural forms—ballooning ovals and fantastic shapes—all dense and highly compressed, *Indelible Miro I* revels in unbridled fantasy and sharp visual wit, a stately abstract presence that projects a sense of universality and timelessness. The piece was executed in 1972 and is hand signed in pencil by the artist.



WHO KNOWS WHAT CONSTITUTES A LIFE
Elizabeth Murray
Color Linocut
5" x 4", 1999

Elizabeth Murray is considered by many to be one of the premier American painters of her generation. More ram-bunctious than refined, her work is distinguished for its formal inventiveness, adventurousness, and for its many contrasts in both shape and color. This original, seven-color, signed edition is limited to 200 copies, of which 26 are lettered A to Z. This is letter K. The accompanying poem is by influential American poet John Ashbery and is signed by him on the colophon page.

OCEANIC
Malcolm Myers
Color Etching
56" x 44", 2002



One of the Midwest's most important 20th century printmakers, Malcolm Myers was educated at the University of Wichita and the University of Iowa. A recipient of numerous awards and honors, he taught for years at the University of Minnesota's Department of Art. His works are in collections throughout the world, including the Brooklyn Museum, the National Gallery, and the Bibliotheque Nationale in Paris. *Oceanic* is signed and numbered by the artist.



L'ESPERVIER (THE SPARROW HAWK)
Pablo Picasso
Acquatint, Etching and Drypoint
10" x 12", 1942

During World War II, Pablo Picasso was commissioned to do a large series of animals entitled *Histoire Naturelle*. Uncharacteristic of Picasso's individual style, *L'Espervier* was executed in Paris and is number 27 from an edition of 226.

BACCHANALE
Pablo Picasso
Color Linocut
12" x 15", 1962



From the 1950s until his death in 1973, Pablo Picasso produced an astonishing number of prints that showed no diminution of his creative powers and technical proficiency. In 1959, he took up the linocut and for the next four years experimented with its possibilities, developing the "color reduction" technique. Filled with sharp lines and abrupt, terse angles, this boldly colored linoleum cut is hand signed in pencil by the artist and suggests the Roman festival of Bacchus celebrated with dancing, song, and revelry.



PIQUE
Pablo Picasso
Linocut
6" x 9", 1962

Pique, with its strong colors and visual boldness, is hand signed in pencil by the artist.

FORESTVILLE TORNADO
Scott Robertson
Pastels
33" x 24", n.d.



Scott Robertson is Professor of Art at the University of Wisconsin—Eau Claire. His work is part of numerous museum and corporate collections throughout the Upper Midwest. *Forestville Tornado* is classically mid-western and devotes itself to one of the region's archetypal subjects, the tornado. This signed original piece renders the tornado in a religious light—the funnel spiraling out of darkness toward light.



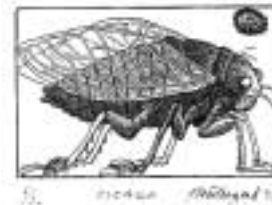
CHIEN DEVANT LA PORTE (THE DOG AT THE THRESHOLD OF THE DOOR)
Georges Rouault
Lithograph
9" x 13", 1929

A companion of Henri Matisse in student days, Georges Rouault was fascinated by what he most condemned about the growing urban world of the early twentieth century. This lithograph, with its shadowy doubles, flat edges, and fiercely dark contours, contains many traits of German Expressionism. Donated to the Anderson Center by Johanna Ghei, the piece is number 74 out of an edition of 100 and is signed in pencil by the artist, as well as being initialed and dated in the plate.

MAO
Andy Warhol
Silkscreen on Wallpaper
41" x 30", 1974



In the mid-1970s, American Pop iconographer Andy Warhol produced a design for wallpaper based on his own 1973 pencil drawings of Chinese leader Mao Zedong's plump, plum-like face. These silkscreen designs served as a patterned background for the artist's paintings in his 1974 exhibition at the Musee Galliera in Paris. Mao's appeal for Warhol was partly due to the fact that his face was one of the most recognizable faces in the world. The work is signed by Warhol in ink.



WEE BEASTIES
Jim Westergard
Wood Engravings
8" x 9", 2000

Jim Westergard's work has been exhibited throughout the United States, Canada, and Europe for the past 30 years. A resident of Red Deer, Alberta, he is the first Canadian wood engraver to be elected to the prestigious Royal Society of Painter-Printmakers and the British Wood Engravers Society. This suite of prints, originally done as a box-set printed in Canada on fine linen paper, is a limited edition, number 5 of 20, and is signed and numbered by the artist.

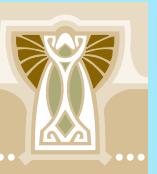


Anderson Center
for Interdisciplinary Studies

163 Tower View Drive, Red Wing, MN 55066
651-388-2009
www.andersoncenter.org
info@andersoncenter.org

Member of Alliance of Artists Communities
RES ARTIS - International Association of Residential Arts Centres

**Anderson
Center**



**P
E
R
M
A
N
E
N
T
C
O
L
L
E
C
T
I
O
N**

